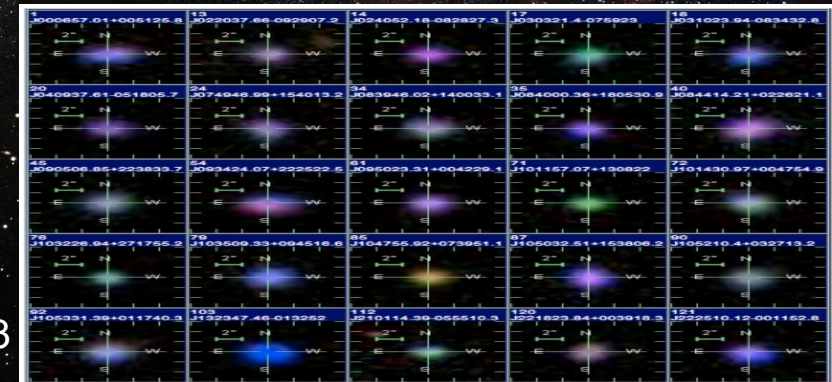


David Fernández Arenas

Roberto Terlevich
Elena Terlevich

Giant H II regions and H II galaxies

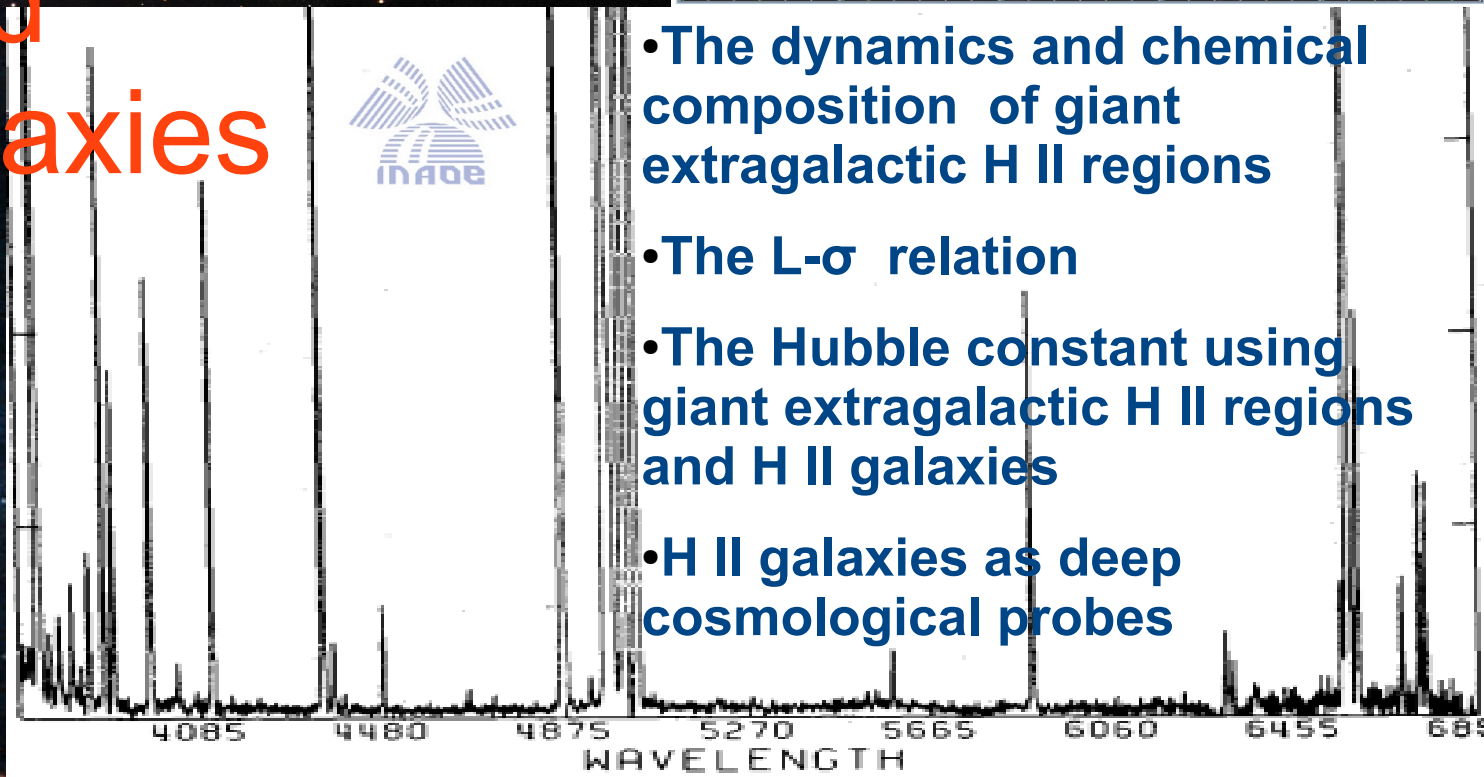
NGC 604



M 33



I Zw 18



- The dynamics and chemical composition of giant extragalactic H II regions
- The L- σ relation
- The Hubble constant using giant extragalactic H II regions and H II galaxies
- H II galaxies as deep cosmological probes