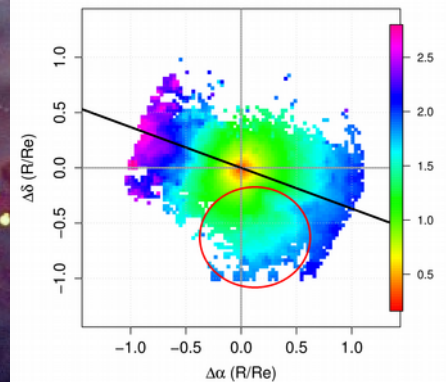
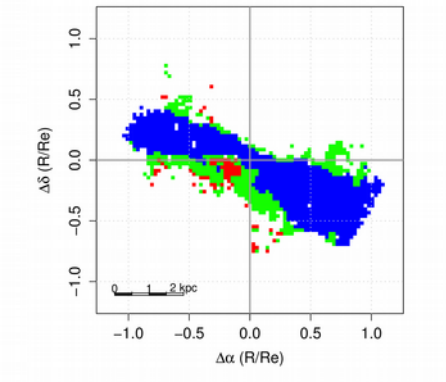
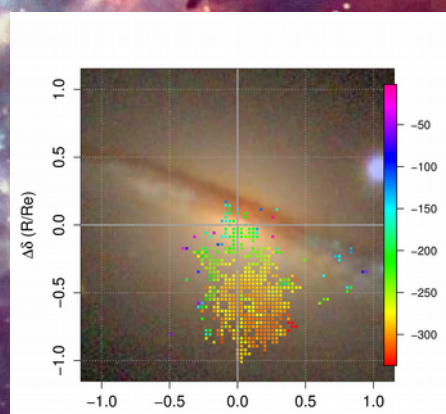
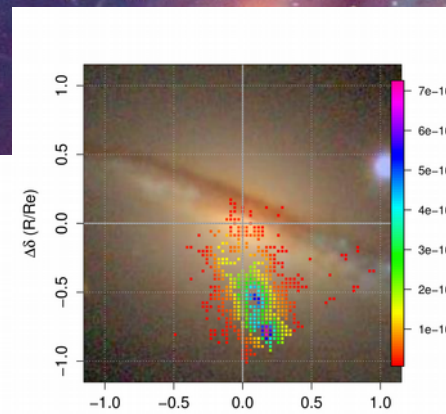
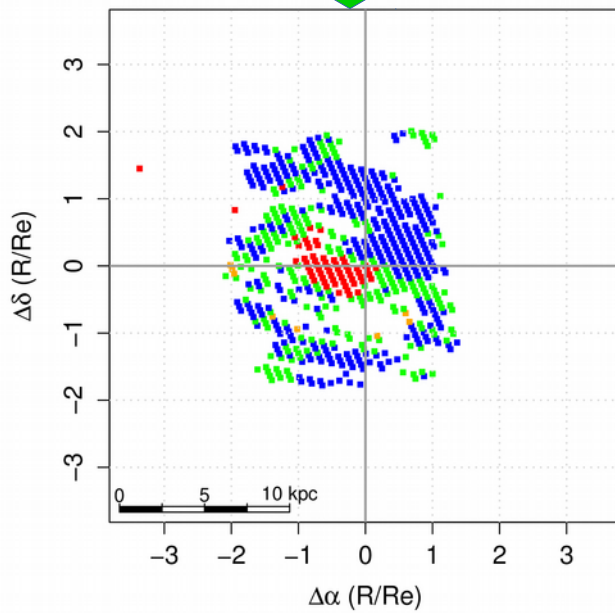
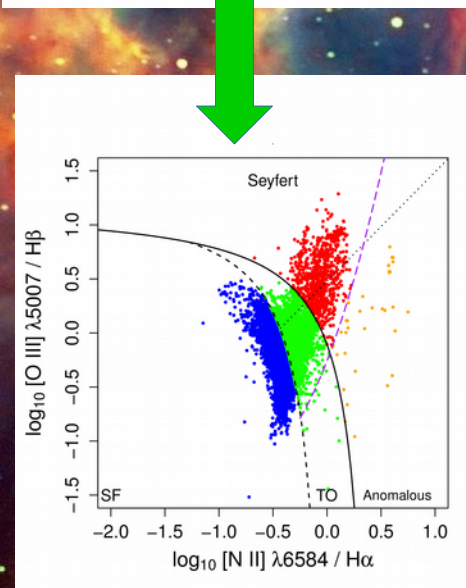
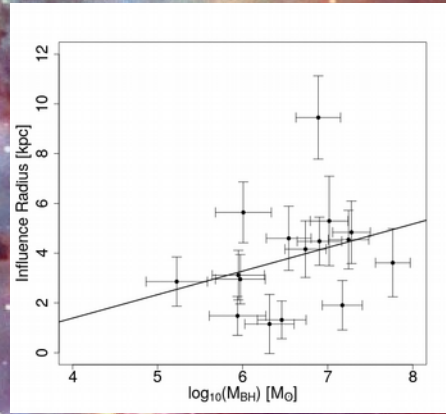
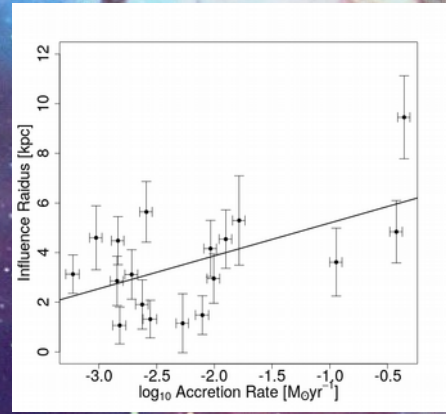
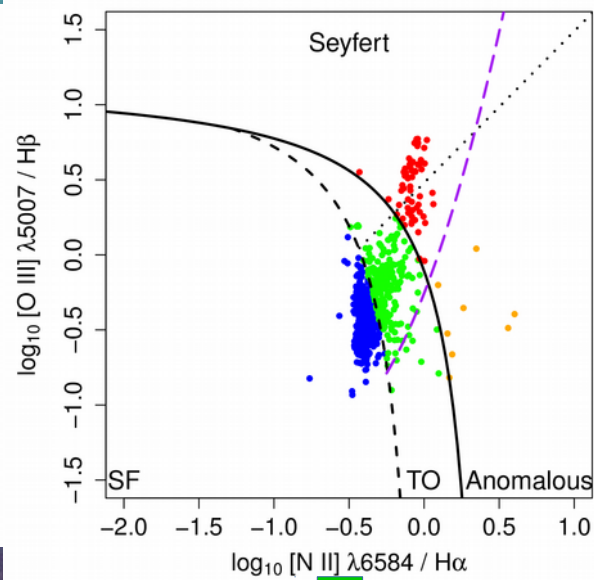
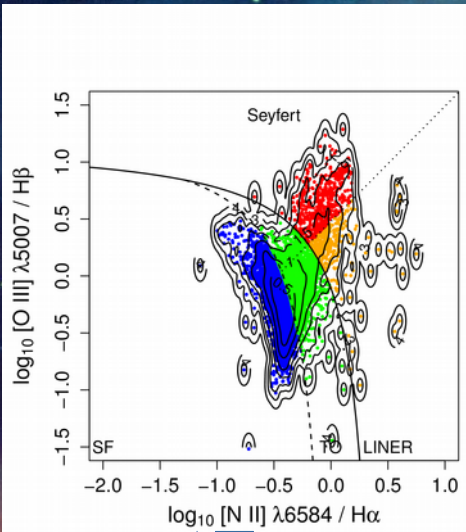




# Searching for The Influence Radius of AGN in Nearby Narrow-Emission-Line Galaxies Using the CALIFA Survey

A.C. Robleto-Orús, J.P. Torres-Papaquí, M. Chow-Martínez, A. Morales-Vargas, R.A. Ortega-Minakata, F.J. Romero-Cruz, J.J. Trejo-Alonso, D.M. Neri-Larios, The Guanajuato IFU Group (GIFU)



arobleto@astro.ugto.mx