



The Nuclear Activities of Nearby S0 Galaxies

Mengyuan Xiao (NJU)

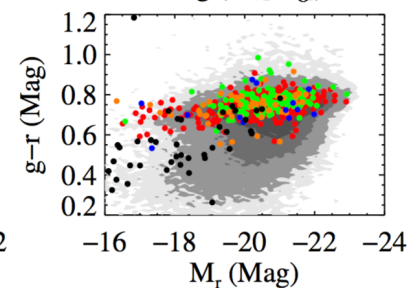
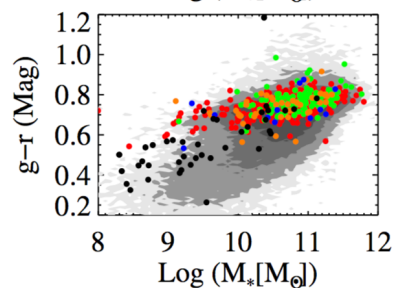
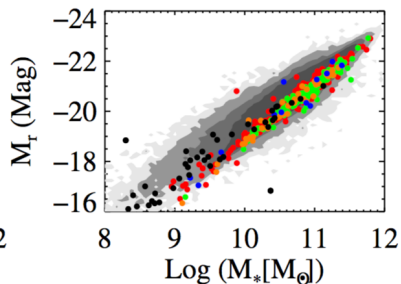
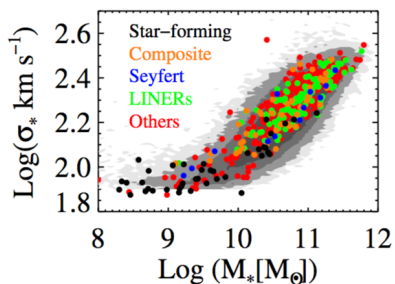
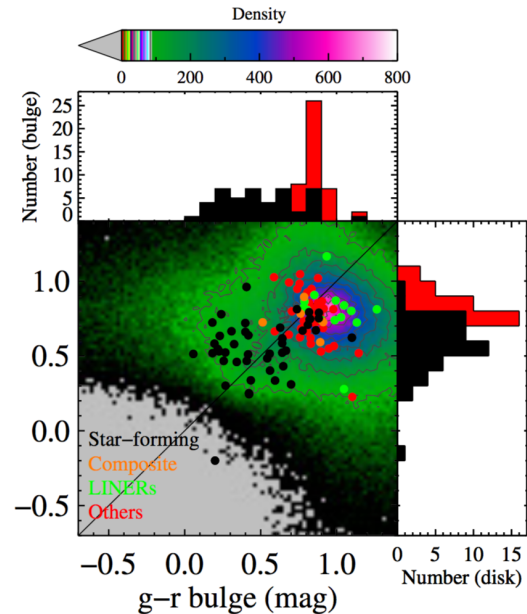
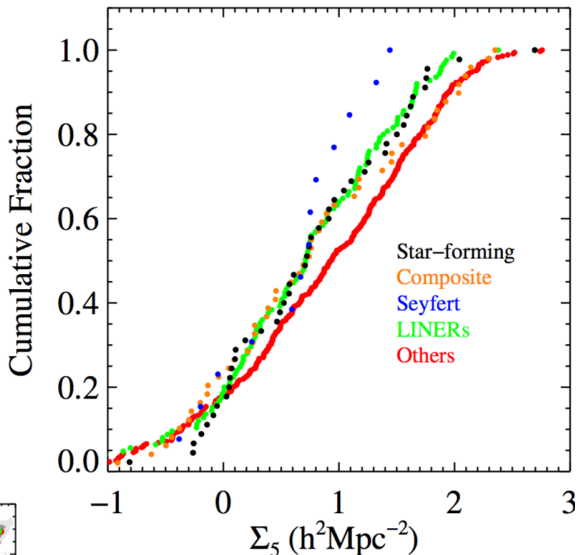


Total sample : 583

Nuclear BPT

- Star forming : 45
- Composite : 49
- Seyfert : 13
- LINERs : 125
- Others : 351

SFR (mean): $0.37 \pm 0.62 M_{\odot} yr^{-1}$



next work and research interests:

- Herschel spectra data
- ISM in early type galaxies